

LITTER EDUCATION: HIGH SCHOOL & COLLEGE

END LITTER! OFFICIAL RULES & GUIDELINES 2020-2021


LITTER EDUCATION: HIGH SCHOOL & COLLEGE

PROGRAM OVERVIEW

Keep Oklahoma Beautiful (KOB) wants to encourage young people to take action in the fight against litter and illegal dumping in Oklahoma.

We're challenging contestants to tackle this issue in a 25-45 second video clip that conveys to all citizens of Oklahoma that littering is costly, deplorable illegal and just downright wrong. The winning video clips will appear on the KOB website and social media platforms as well. Winners in each division will also win a \$750 prize. One prize per submission will be divided by participants.

*Oklahoma Academic Standards for Excellence HS-ESS3 codes AND HS-LS code on page #.



LITTER EDUCATION: CONTEST RULES & ELIGIBILITY

The End Litter! contest is open only to residents of Oklahoma Age 14 and older (at the time of video submission)

Students enrolled as full-time students in grades 9-12 or full-time students enrolled in Oklahoma post-secondary institution.

Due to restrictions because of COVID-19, students are allowed to register individually to complete projects safely and from a distance. All entries must include a teacher or parent listed as the contact person and must meet the eligibility rules.



PROGRAM TIMELINE

AUGUST 20

REGISTRATION OPENS

NOVEMBER 15

REGISTRATION CLOSES

DECEMBER 31

SUBMISSION DEADLINE

EARLY FEBRUARY

ONLINE VOTING

LATE FEBRUARY/MARCH

FINALIST ANNOUNCED

CONTEST RULES & ELIGIBILITY

Students in public, private, and parochial institutions, as well as those who are home-schooled, are eligible to participate. The two divisions in which entries compete and will be judged are High School (grades 9-12) and post secondary institutions (universities, colleges, community colleges, etc). Entries may be submitted by an individual or group. If video is produced by a group, one individual must be listed as the contact person. Each person in a group entry must meet eligibility rules.

HOW TO ENTER

Those choosing to enter the contest are required to register between **August 20th–November 15th** at www.keepoklahomabeautiful.com.

Registration and submission of video two separate processes. Upon registration, the primary contact listed will receive an email including the further instructions about the submission process. Submission of completed videos may be made on our website at keepoklahomabeautiful.com beginning at any time after registration, but no later than **December 31st at 11:59 p.m.** Entrants must retain a copy of their submission in its original format after submitting it to KOB. If you are selected as a winner, you will need to provide KOB with your submission in its original format.

By entering the contest, the entrant agrees that all submissions may be posted on keepoklahomabeautiful.com, or any social media pages of KOB and any sponsor's website for viewing by the general public. Entrant grants KOB an exclusive and perpetual license to publish, display, reproduce or otherwise use the submission for KOB and its designees in its sole discretion without future notice or compensation. KOB doesn't guarantee the posting of any submissions and reserves the right not to post a submission. All entrants' submissions become the property of KOB and will not be returned to the entrant.

CONTEST RULES & ELIGIBILITY

Entrants must agree to indemnify and hold KOB and its sponsors harmless from and against any suits, claims, losses, damages and expenses, including reasonable attorney fees that may arise from or in connection with any entrant's submission and the use and/or display of the entrant's submission.

For any online voting processes utilized in this contest, the use off any "boosting" websites, programs or other "boosting" technology is strictly prohibited and shall be grounds for immediate disqualification of the contestant.

SUBMISSION

- Must be at least 25 seconds, but no longer than 45 seconds in length.
- Accordance with these Official Rules, the Prize will be awarded to the Primary Entrant and it will be the responsibility of the Primary Entrant to distribute the prize.
- Be entirely original work. Entries must be created solely for the purpose of entry in this contest and cannot have been submitted previously in a promotion or contest of any kind, or exhibited or previously displayed publicly through Instagram, Facebook, Twitter or any other means.
- After videos are submitted, they may not be displayed publicly through Email, YouTube, Facebook, Twitter or any other means
- Not contain copyrighted music that requires any additional clearances for the sponsor to use or post on public websites or to use in public forums of any kind.
- Not contain or reference any names, products or services of any company or entity or any third party trademarks, logos, trade dress or promotion of any brand, product or service.
- Have the permission of any persons who appear or are referred to in the submission. Entrants are solely responsible for obtaining consent prior to submitting their video. Formal submission of your video will represent any required clearances. In the event where clearances are not covered, the submission will be disqualified.

WINNER SELECTION & JUDGING PROCESS

SUBMISSIONS: ART GUIDELINES

- Not be considered lewd, obscene, sexually explicit, pornographic, disparaging, defamatory, libelous or otherwise contain inappropriate content or objectionable material. Submissions as described above will be removed from the competition at KOB's sole and unfettered discretion.
- Be about the negative effects of litter and/or how litter problems can be solved. For example, the video should demonstrate how littering is wrong, ugly, smelly, toxic for the environment and expensive to clean up. It may promote proper waste disposal, explain the penalties for littering or in any way demonstrate why litter and littering is bad for Oklahoma and what could be done to END LITTER.
- Must be in one of the following formats: *.mp4, *.mov, *.mpg, *.m4v, *.avi, *.qtff
- Be received no later than **December 31 at 11:59 p.m. CST.**

SUBMISSIONS: ART GUIDELINES

A panel of judges selected by the sponsoring partners will evaluate and select six (6) finalists in each of the two divisions: HIGH SCHOOL and POST-SECONDARY.

In the event of a tie, the judges will have the sole authority to select the winner.

The 12 finalist videos (selected via the judging process described above) will be posted on an online voting site in early 2021. The general public will be invited to go online to the site to vote for their favorite video. Online voting will end in mid-January.

KOB reserves the right to change, update or otherwise amend these rules & guidelines at any time.

WINNER SELECTION & JUDGING PROCESS

Division winners will be determined by the highest number of votes on the vote site. The two winners and all finalists will be notified of the outcome via email. The official announcement of the two winning videos will be made on keepoklahomabeautiful.com, and all KOB social channels within ten (10) days of the close of online voting.

The winning videos will be posted on the websites, all KOB social media and the Oklahoma Department of Transportation.

For any online voting processes utilized in this contest, the use off any “boosting” websites, programs or other “boosting” technology is strictly prohibited and shall be grounds for immediate disqualification of the contestant.

PRIZES

EACH division winner will receive \$750!

CRITERIA

VIDEOS will be judged based on the following criteria:

- (1/3) Creativity and ability to ignite passion, get attention, and potential to change attitudes and behaviors about littering.
- (1/3) Originality
- (1/3) Knowledge of the real problems of littering Oklahoma and appropriateness to theme.

OKLAHOMA ACADEMIC STANDARDS FOR SCIENCE

At KOB, we believe that ending litter begins with educating children. Debris and litter scattered along Oklahoma roadways, parks, lakes and streams is a preventable source of pollution. We want to engage Oklahoma's youth to become proactive in their understanding of sustainable environmental health for Oklahoma. Below is a list of Oklahoma Academic Standards for high school science curriculum where incorporation of this video program is most compatible.

PAST WINNERS



2019-2020 High School
Mooreland High School
Mooreland



2019-2020 College
Eastern Oklahoma County
Technology Center
Choctaw



2018-2019 College
Southeastern Oklahoma
State University
Durant

OKLAHOMA ACADEMIC STANDARDS FOR SCIENCE

EN.LS2.7 ECOSYSTEMS: INTERACTIONS, ENERGY, AND DYNAMICS

Disciplinary Core Ideas: Anthropogenic changes (induced by human activity) in the environment can disrupt an ecosystem and threaten the survival of some species. Biodiversity is increased by the formation of new species (speciation) and decreased by the loss of species (extinction). Humans depend on the living world for the resources and other benefits provided by biodiversity, but human activity is also having adverse impacts on biodiversity. Thus, sustaining biodiversity so that ecosystem functioning and productivity are maintained is essential to supporting and enhancing life on Earth. Sustaining biodiversity also aids humanity by preserving landscapes of recreational or inspirational value.

Performance Expectations: Design, evaluate, and refine a solution for reducing the impacts of human activities on the environment and biodiversity.

Clarification Statement: Examples of human activities can include habitat destruction, pollution, introduction of invasive species, overexploitation, climate change, overpopulation, urbanization, and building dams.

ESS3.2 EARTH AND HUMAN ACTIVITIES

Disciplinary Core Ideas: All forms of energy production and other resource extraction have associated economic, social, environmental, and geopolitical costs and risks as well as benefits. New technologies and social regulations can change the balance of these factors. When evaluating solutions, it is important to take into account a range of constraints, including cost, safety, reliability, and aesthetics, and to consider social, cultural, and environmental impacts.

OKLAHOMA ACADEMIC STANDARDS FOR SCIENCE

Performance Expectations: Evaluate competing design solutions for developing, managing, and utilizing energy and mineral resources based on cost-benefit ratios on large and small scales.

Clarification Statement: Emphasis is on the conservation, recycling, and reuse of resources (such as minerals and metals) where possible, and on minimizing impacts where it is not. Examples of large-scale solutions include developing best practices for agriculture; soil use; forestry; mining; and production of conventional, unconventional, or renewable energy resources. Examples of small-scale solutions could include mulching lawn clippings or adding biomass to gardens.

EN.ESS3.3 INTERACTIONS, ENERGY, AND DYNAMICS

Disciplinary Core Ideas: Construct an explanation based on evidence for how the availability of natural resources, occurrence of natural hazards, and changes in climate effect human activity.

Performance Expectations: Use computational simulations to illustrate changes between the relationships of natural resources, human populations, and biodiversity and their sustainability within Earth systems.

Clarification Statement: Emphasis is on the importance of responsible stewardship of Earth's resources. Examples of factors that affect the management of natural resources include costs of resource extraction and waste management, per-capita consumption, and the development of new technologies. Examples of factors that affect human sustainability include agricultural efficiency, levels of consumption, and urban planning.

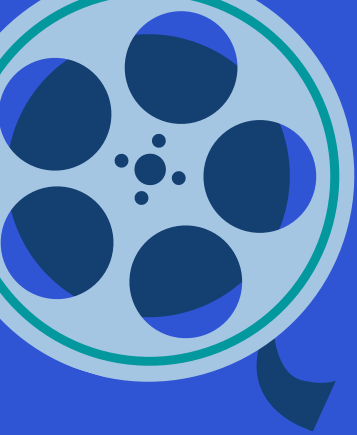
OKLAHOMA ACADEMIC STANDARDS FOR SCIENCE

EN.ESS3.4 EARTH AND HUMAN ACTIVITIES

Disciplinary Core Ideas: Scientists and engineers can make major contributions by developing technologies that produce less pollution and waste and that preclude ecosystem degradation. When evaluating solutions, it is important to take into account a range of constraints, including cost, safety, reliability, and aesthetics, and to consider social, cultural, and environmental impacts.

Performance Expectations: Evaluate design solutions for a major global or local environmental problem that reduces or stabilizes the impacts of human activities on natural systems.

Clarification Statement: Examples of major global or local problems could include water pollution or availability, air pollution, deforestation, or energy production. Examples of data on the impacts of human activities could include the quantities and types of pollutants released, changes to biomass and species diversity, or areal changes in land surface use. Examples for limiting future impacts could range from local efforts (such as reducing, reusing, and recycling resources) to large-scale geoengineering design solutions.



At Keep Oklahoma Beautiful we recognize it's good to walk the roadways and keep them clear. It's good to take the dirty and make it clean. It's good to take the water and make it sparkle, to take foul air and make it sweet, to take barren and wasted land and make it flourish. It's good to take disconnected people and make them a community joining hands for a cause. We are doing GOOD things at KOB, we would love for you to join us to keep Oklahoma's beauty running deep!



CONTACT

Jessika Bergeron, Recycle Facilitator
jessika@keepoklahomabeautiful.com
405-286-9141

